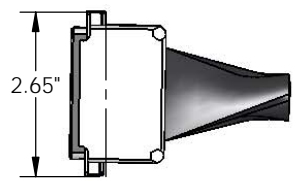
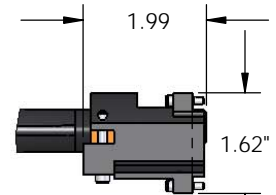


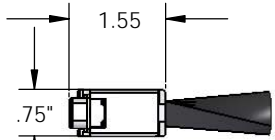
8 7 6 5 4 3 2 1



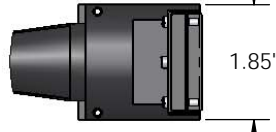
DETAIL D  
SCALE 1 : 2



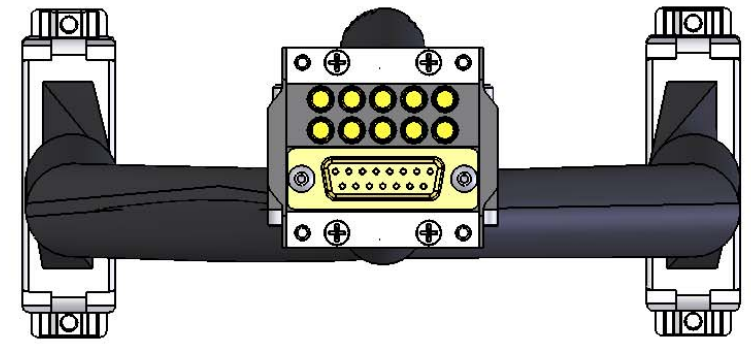
DETAIL B  
SCALE 1 : 2



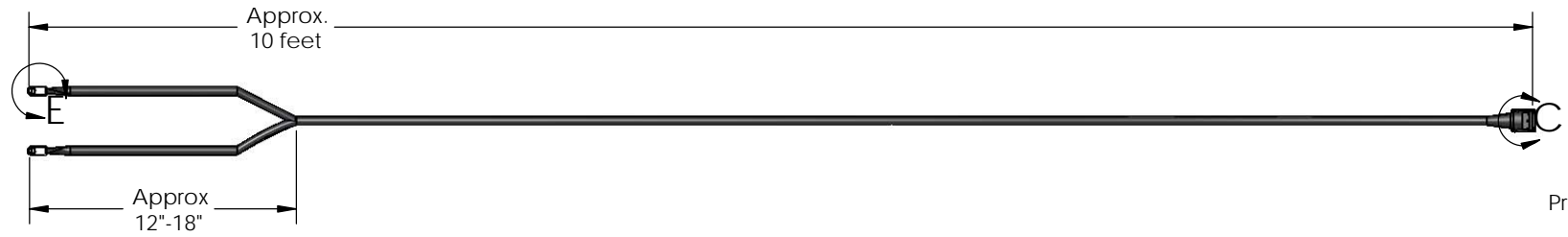
DETAIL E  
SCALE 1 : 2



DETAIL C  
SCALE 1 : 2



DETAIL A  
SCALE 1 : 1



Probe End

Power Box End

Weight: Approx. 6 3/4 lbs  
Min. Bend Radius: 3"

**PROPRIETARY AND CONFIDENTIAL**  
THE INFORMATION CONTAINED IN THIS DRAWING IS THE SOLE PROPERTY OF SCIENCE ENGINEERING ASSOC., INC. ANY REPRODUCTION IN PART OR AS A WHOLE WITHOUT THE WRITTEN PERMISSION OF SCIENCE ENGINEERING ASSOC., INC. IS PROHIBITED.

		UNLESS OTHERWISE SPECIFIED:		NAME	DATE
		DIMENSIONS ARE IN INCHES		DRAWN	
		TOLERANCES:		CHECKED	
		FRACTIONAL ± 1/32		ENG APPR.	
		ANGULAR: MACH ± 1° BEND ± 2°		MFG APPR.	
		TWO PLACE DECIMAL ± 015		Q.A.	
		THREE PLACE DECIMAL ± 005		COMMENTS:	
		INTERPRET GEOMETRIC TOLERANCING PER:			
		MATERIAL:			
		FINISH:			
NEXT ASSY	USED ON				
APPLICATION		DO NOT SCALE DRAWING			



TITLE:  
**Multi Element Control Cable-1  
(Power Box to Probe Cable)**

SIZE	DWG. NO.	REV
<b>B</b>	400230	
SCALE: 1 : 10	WEIGHT:	SHEET 1 OF 1

8 7 6 5 4 3 2 1