

SEA Inc.  
Real Time Data Acquisition Systems

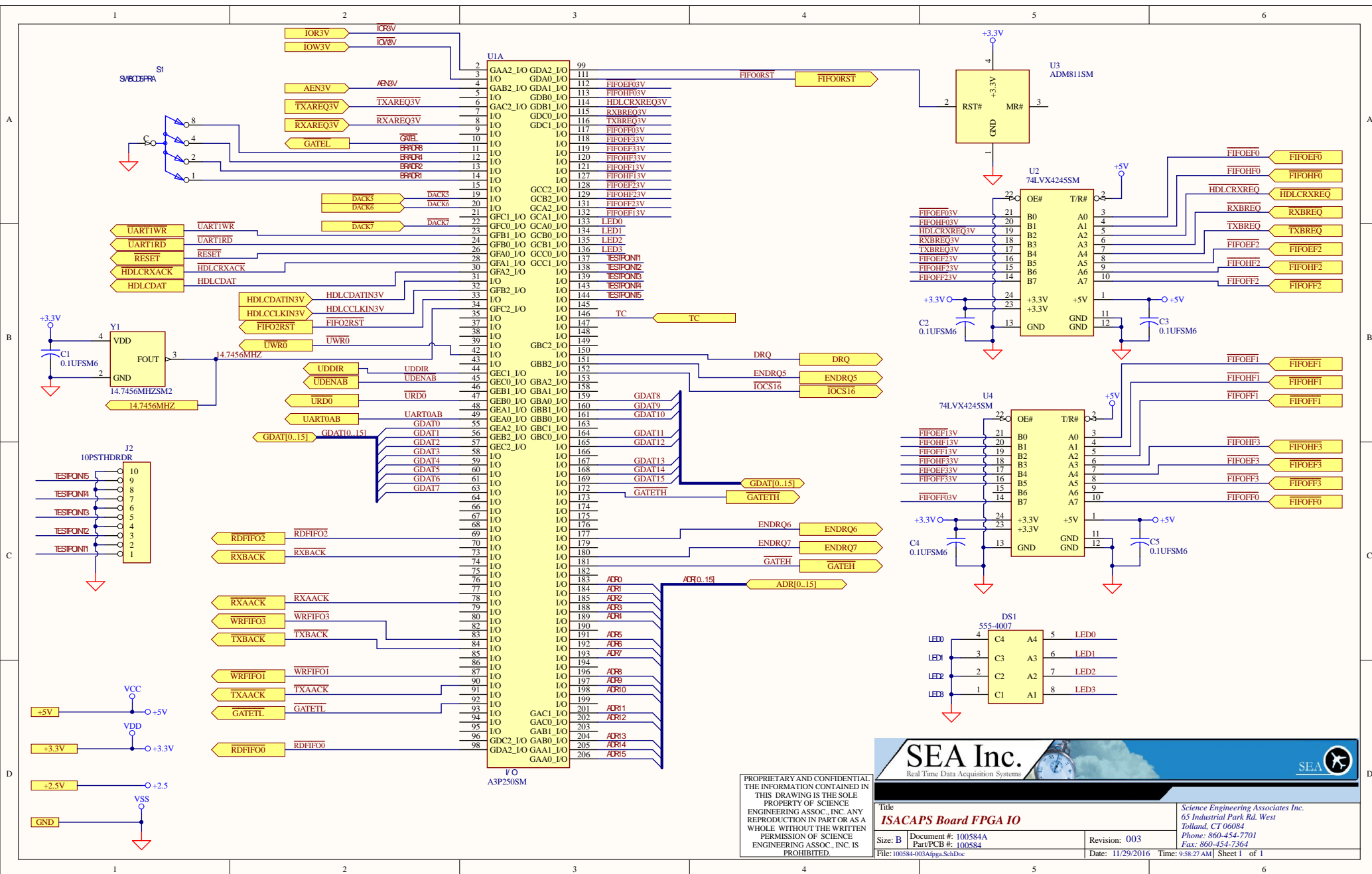
PROPRIETARY AND CONFIDENTIAL  
THE INFORMATION CONTAINED IN  
THIS DRAWING IS THE SOLE  
PROPERTY OF SCIENCE  
ENGINEERING ASSOC., INC. ANY  
REPRODUCTION IN PART OR AS A  
WHOLE WITHOUT THE WRITTEN  
PERMISSION OF SCIENCE  
ENGINEERING ASSOC., INC. IS  
PROHIBITED.

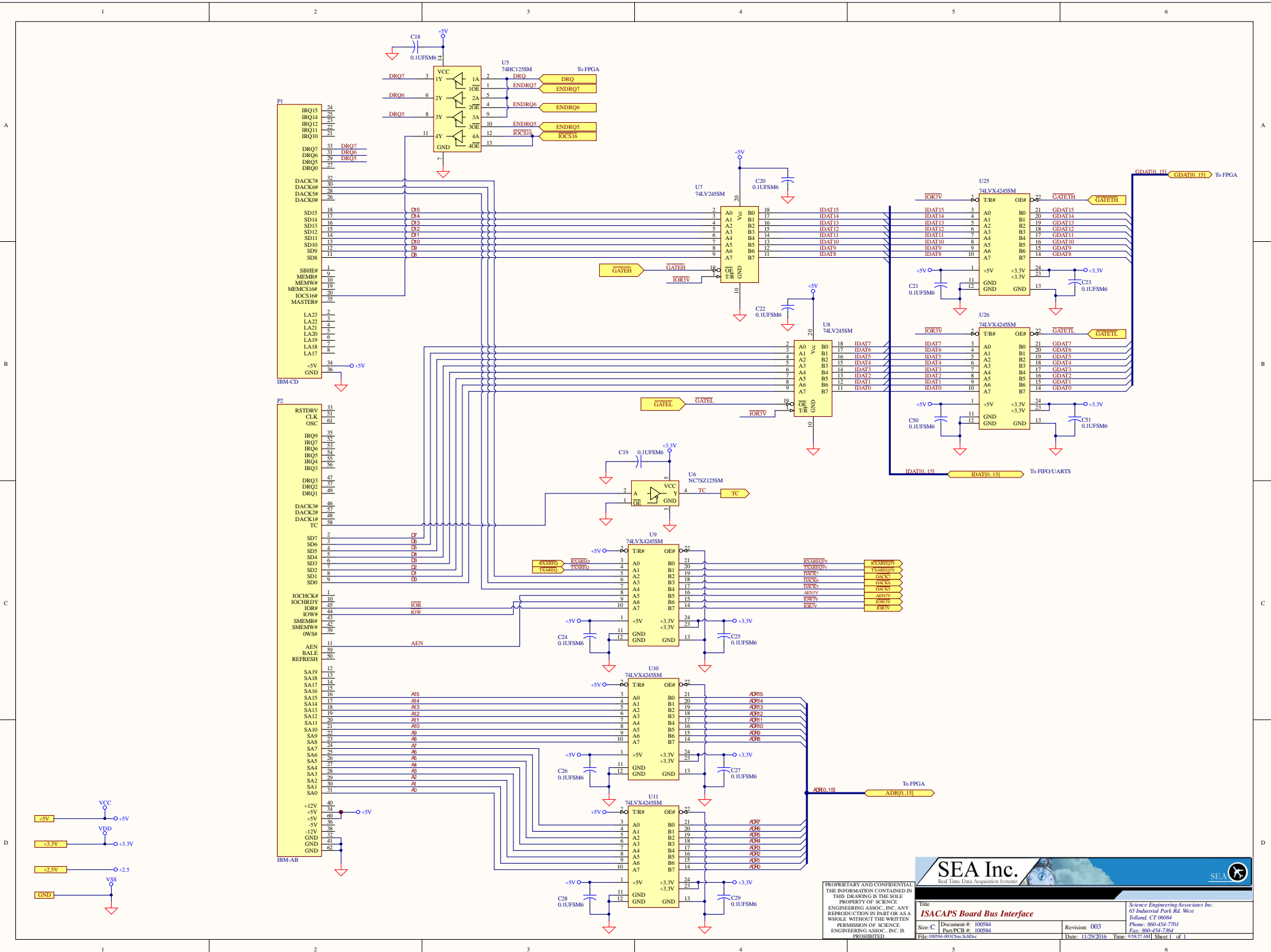
Title: **ISACAPS Board Bus Interface**  
Size: C Document # 100584  
Part/PCB # 100584  
File: 100584-001.FPGASchDoc


Revision: 003  
Date: 11/29/2016 Time: 9:58:36 AM

Science Engineering Associates Inc.  
65 Industrial Park Rd. West  
Tolland, CT 06084  
Phone: 860-454-7701  
Fax: 860-454-7704

Sheet 1 of 1



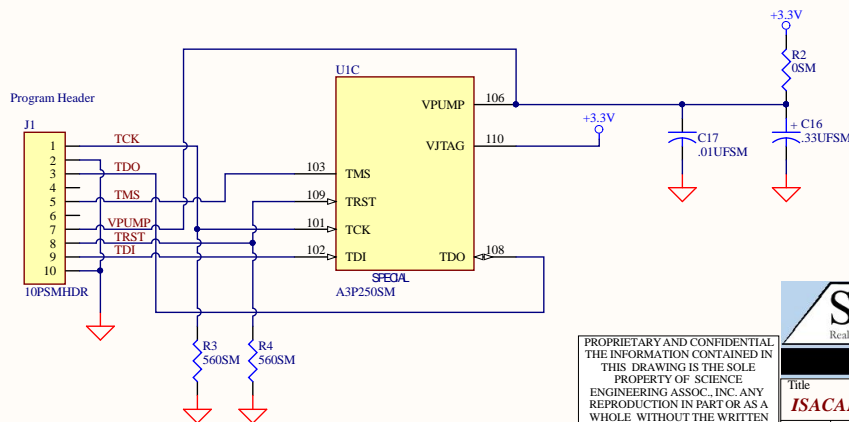
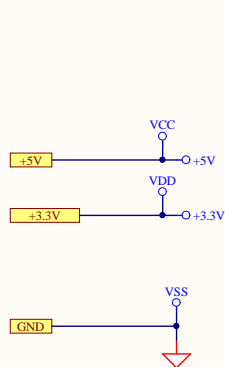
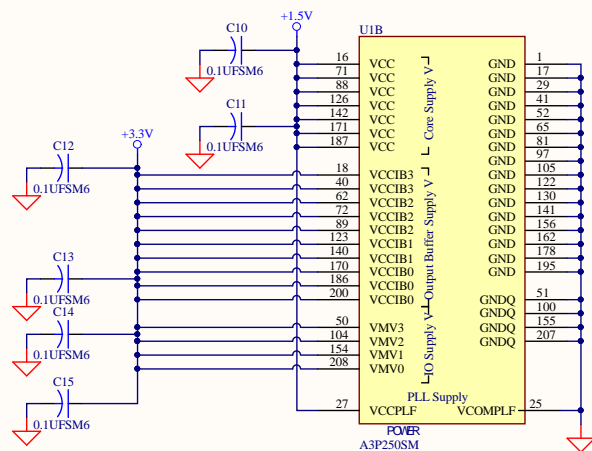
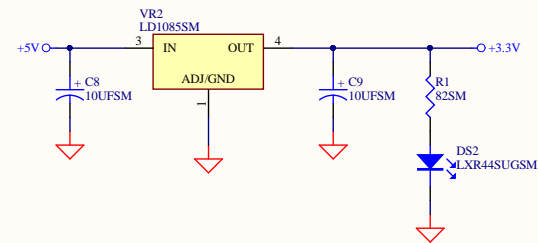
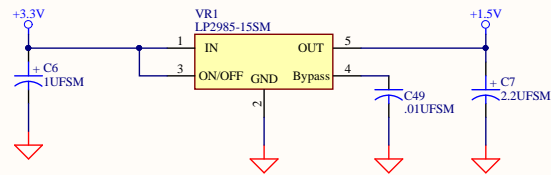




SEA Inc.  
Real Time Data Acquisition Systems

PROPRIETARY AND CONFIDENTIAL  
THE INFORMATION CONTAINED IN  
THIS DRAWING IS THE SOLE  
PROPERTY OF SCIENCE  
ENGINEERING ASSOC., INC. ANY  
REPRODUCTION IN PART OR AS A  
WHOLE WITHOUT THE WRITTEN  
PERMISSION OF SCIENCE  
ENGINEERING ASSOC., INC. IS  
PROHIBITED.

Title	ISACAPS Board Bus Interface	Science Engineering Associates Inc. 65 Industrial Park Rd. West Tolland, CT 06084 Phone: 860-454-7701 Fax: 860-454-7704
Size: C	Document # 100584 Part/PCB # 100584 File: 100584-001bus.schDoc	Revision: 003 Date: 11/29/2016, Time: 9:58:37 AM



PROPRIETARY AND CONFIDENTIAL.  
THE INFORMATION CONTAINED IN  
THIS DRAWING IS THE SOLE  
PROPERTY OF SCIENCE  
ENGINEERING ASSOC., INC. ANY  
REPRODUCTION IN PART OR AS A  
WHOLE WITHOUT THE WRITTEN  
PERMISSION OF SCIENCE  
ENGINEERING ASSOC., INC. IS  
PROHIBITED.

<b>SEA Inc.</b> Real Time Data Acquisition Systems		Science Engineering Associates Inc. 65 Industrial Park Rd. West Tolland, CT 06084 Phone: 860-454-7701 Fax: 860-454-7364
Title <b>ISACAPS Board Power</b>		Revision: 003
Size: B	Document #: 100584 Part/PCB #: 100584	Date: 11/29/2016 Time: 9:38:27 AM Sheet 1 of 1